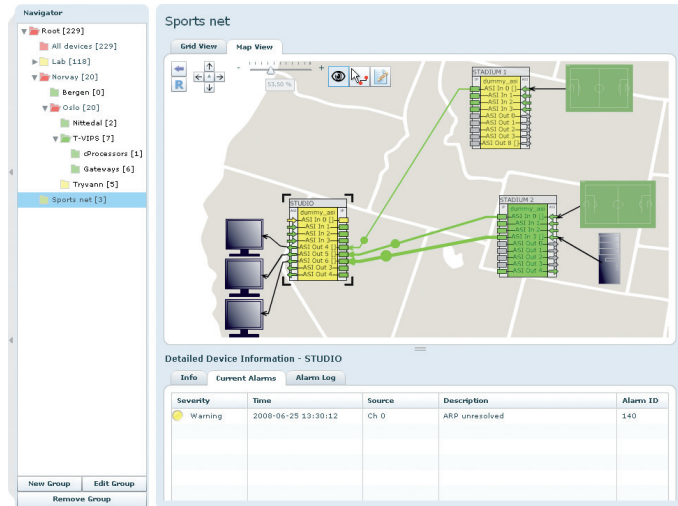




T-VIPS Connect



T-VIPS Connect is an efficient solution for monitoring and control of equipment in video contribution and distribution networks. The T-VIPS Connect connection manager makes it easy to configure connections over IP networks.

T-VIPS Connect supervises the equipment's alarm status and continuously logs alarms and events from the devices in the system.

The connection manager module is a convenient tool to configure and supervise connections over IP networks. Limited technical know-how is required to set up an IP connection, and it allows broadcasters and network operators to simplify their day to day operation of Video Gateways.

The T-VIPS Connect inventory module makes it easy to supervise, maintain and configure devices in a large distribution system. T-VIPS Connect can be used with both the Video Gateway and cProcessor product families.

T-VIPS Connect is a future-proof investment as the solution is flexible and scalable.

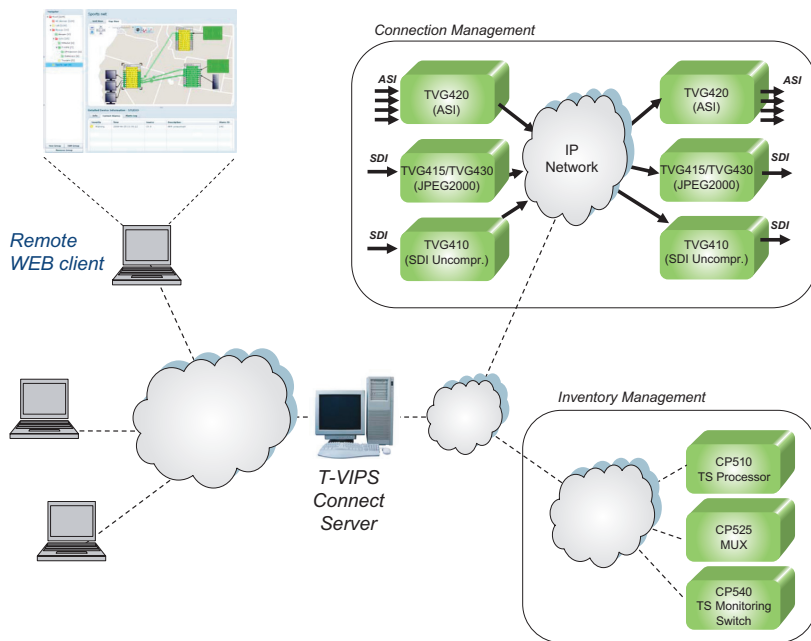
Applications

- Remote monitoring of T-VIPS equipment in contribution and distribution networks
- Management of professional broadcast contribution
- Management of DTT distribution networks
- Set up and tear down of video connections over IP networks
- Supervision and alarm correlation for a complex network

Key Features

- **Equipment inventory management**
 - Site/group and equipment registration
 - IP address and UDP port management
 - Sw upgrade management
 - Configuration scheduling
 - Configuration file management
- **Connection Management**
 - Easy set up of new connections over IP networks
 - Easy tear down of connections after use
- **Monitoring**
 - Supervision of status of current connections
 - Supervision of alarms for installed equipment
 - Logging of events and connection status
 - SNMP trap forwarding
- **Scheduling**
- **User-friendly operator interface**
 - Central equipment configuration
 - WEB based client for local and remote control
 - Easy access to system from any WEB browser
 - SNMP-based northbound interface for easy integration to top level NMS systems
- **Security**
 - User access control
 - Several user levels





Inventory Management and Network Configuration

T-VIPS Connect provides an intuitive interface to define the devices in a system. The system enables the user to separate devices into different groups. A group may typically contain all devices at a site or all devices carrying a particular signal. One single device may be part of more than one group. Once the system is defined, the server will continuously poll the registered equipment for status. A group's status will continuously be shown.

In addition to status monitoring, T-VIPS Connect can manage software upgrades for a user selected set of devices.

Connection Management

T-VIPS Connect provides a user-friendly interface to configure connections between nodes. The user defines the connection from port N on equipment A to port M on equipment B and the system automatically configures the connection. No detailed information about IP addresses or UDP port numbers is required.

To simplify operation of connections, the user can select a profile for the connection from a pre-defined set of profiles, e.g. news profile or sport profile. The profiles will control the settings for latency and forward error correction. For JPEG2000 video connections (using TVG415/TVG430), the bitrate is also part of this profile.

Several connections can share ports as long as only one connection is active at a time. This makes it easy to have a predefined "favourite" list of connections in the system, where the operator can easily enable or disable each connection.

Monitoring and System View

T-VIPS Connect continuously monitors all devices in the system. SNMP TRAP messages are logged in a database for easy access later on. If a problem with a device is detected, it is easy to launch the unit's WEB interface directly from T-VIPS Connect to get more details of the cause of an error.

T-VIPS Connect also allows status monitoring of connections. When a device/port reports problems, T-VIPS Connect associates the problem with one or more connections, informing the operator what feeds are affected by the error.

The "graphical view" module in T-VIPS Connect allows the operator to define custom equipment views. These custom views provide a clear visual view of the system health and status.

T-VIPS Connect also contains an integrated SNMP agent that can report alarm status to a top level NMS system.